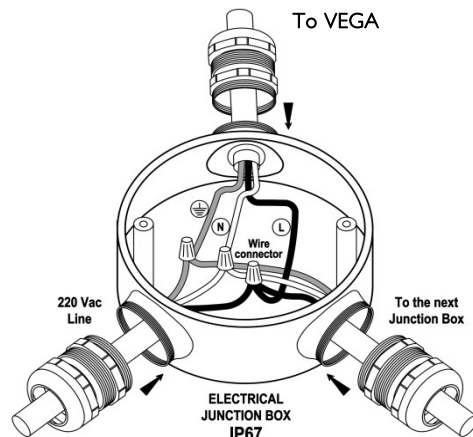
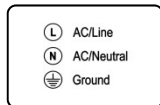
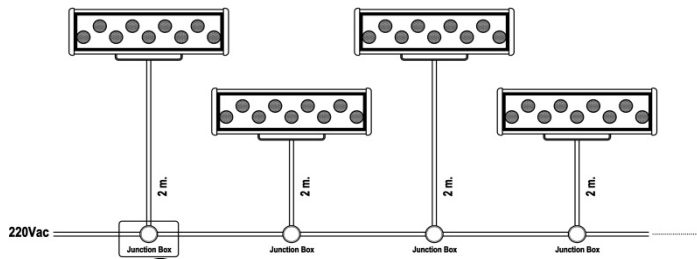


INSTALLATION INSTRUCTIONS

Electrical Connections

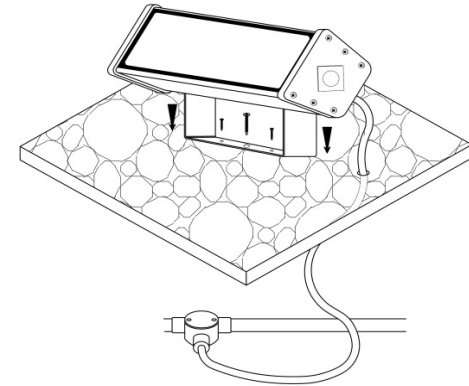
⚠ CAUTION

- Verify power is off before inspection, installation or removal.
- Improper installation may result in a fire or electrical hazard.
- The installation must be done by an electrical expert or a specialized maintenance team.
- Please don't use product output as input. Don't connect data inputs of products parallel. Use booster outputs for each line.
- Please attach end cap to product connector at the end of the line. Connect max 20 pieces for each product serially.
- Make sure male and female connectors are tightened completely while connecting them to each other.
- Please be careful with tabs while connecting connectors. Power must be absolutely off while connecting connectors to each other.
- Connections at joints to input cable must be well done or, products on the line won't work properly.
- Don't accidentally connect 220Vac to the data input of input cable. Please control connections very well. All products on the line will break down when connected reversely.
- If line length exceeds 50 meters, use 1 piece of 1/2 booster in between.



INSTALLATION INSTRUCTIONS

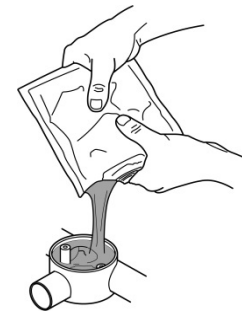
Mounting LED Luminaire



Install the LED Luminaire into the pavement or concrete footing or facade surface or wall.

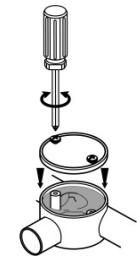
To water proof the connections,

1.



Add epoxy resin to water proof junction box

2.



Seal junction box by using a screwdriver

Warning: All products are covered under a two(2) year manufacturer's warranty. Joints between external cables should be properly insulated by using waterproof epoxy resin which is mentioned above. If the cable joints are not insulated, small amount of water may go into cable assembly. Hence, failures can occur. (E.G. ELCB tripping.)

Instructions and information presented above are intended for informational, suggestive purposes only. The products are not covered under warranty for damages of any kind arising out of or in connection with water proofing methods.

MECHANICAL SPECIFICATIONS | MEKANİK ÖZELLİKLER

Version	Versiyon	DA-CL9
Dimensions	Boyutlar	L 250 mm x W 65 mm x H 76 mm
Weight	Ağırlık	1.11 kg.
Housing	Gövde	Die-cast aluminium / Alüminyum enjeksiyon
Housing Color	Gövde rengi	RAL 9007
Cover	Kapak	Transparent polycarbonate cover / Transparan polikarbon kapak
Mounting detail	Montaj detayı	ainless steel mounting bracket - W 48 mm x H 62 mm / Paslanmaz çelik mafsallı - G 48 mm x Y 62 mm
Protection class	Koruma sınıfı	IP65
Temperature range	Sıcaklık aralığı	-20 °C ~ +85 °C

ELECTRICAL SPECIFICATIONS | ELEKTRİK ÖZELLİKLERİ

Input voltage	Giriş voltajı	220V AC ~ 240V AC (Integral power supply / Dahili güç kaynağı)
LED quantity	LED adeti	9 LEDs
Power consumption	Güç tüketimi	12.5W
Cable ¹	Kablo ¹	Input-Output / Girdi-Çıktı 25 cm. cable / 25 cm. kablolu
Cable ²	Kablo ²	Direct / Direkt 2 m. cable / 2 m. kablolu
Connector	Konnektör	Connector IP68 upon request / İsteğe bağlı IP68 konnektör
Max. Run	Maks. Sürme	For input-output - max. 50 pcs can be connected / Girdi çıktı için maks. 50 adet bağlanabilir

LED SPECIFICATIONS | LED ÖZELLİKLERİ

Due to continuous improvements and innovations, specifications may change without notice / Sürekli iyileştirmeler ve yenilikler sayesinde, özellikler önceden haber verilmeksizin değiştirilebilir			
LED type	LED tipi	350-700mA Golden Dragon Plus	
LED brand	LED markası	OSRAM Opto	
Color temperature	Renk sıcaklığı	<input type="checkbox"/> White	Beyaz 5000 - 7000 K
		<input type="checkbox"/> Warm white	Güneş ışığı 2700 - 3000 K
Lumens	Lümen	W White	Beyaz 1170 lm
		WW Warm white	Güneş ışığı 873 lm
Beam Angle	Işıma Açısı	N (narrow/dar): 6° M (medium/orta): 26° O (oval/oval): 6°x36° W (wide/geniş): 70°	
Lifespan	Ömür	35.000 hrs (50°C) / 50.000 hrs (25°C)	

CERTIFICATIONS | SERTİFİKALAR

EN 62031:2008 EN 60598-2-1:1989 EN 60598-1:2004+A1:2006
IP Test according to IEC EN 60529 / TS 3033 EN 60529
CE complies with 2006 / 95 / EC
RoHS complies with 2002 / 95 / EC
Turkish Patent Institute Registration Number: 2008 04595 Türk Patent Enstitüsü Kayıt Numarası: 2008 04595



VEGA has been planned for multi-purpose outdoor designs. It is also possible to create different effects from different directions for the same place by its adjustable body back and forth. Product design has a detailed plan from tip to toes in light of the visuality of architectural use.

VEGA çok amaçlı dış mekân tasarımlarına yönelik planlanmıştır. Aynı zamanda ileri geri ayarlanabilen gövdesiyle aynı mekânda farklı açılardan değişik efektler yaratmak mümkündür. Ürün tasarımı mimari kullanımın görselliği ışığında baştan aşağı detaylı bir plana sahiptir.



Damla LED

VEGA

VEGA is a linear lighting wall washer with a robust aluminium housing and a UV resistant polycarbonate cover. The product suits perfectly for highlighting outdoor and indoor applications offering powerful and efficient wall washing effects and providing a high environmental protection grade (IP65).

VEGA sağlam alüminyum gövdeye ve UV ışınlarına dayanıklı polikarbon kapaga sahip bir lineer duvar yıkama aydınlatmadır. Ürün güçlü ve verimli duvar yıkama efektleri sunan iç ve dış mekan uygulamaları vurgulayarak ve yüksek bir çevre koruma sınıfı (IP65) sağlamak için mükemmeldir.

Powerfull & Efficient
Güçlü ve Verimli

Die-cast aluminium body
Compact design
Surface mounting
High lumen output
High efficient
Easy installation
Low maintenance
Different optics

Alüminyum enjeksiyon gövde
Kompakt tasarım
Yüzey montaj
Yüksek lümen çıkışı
Yüksek verimli
Kolay kurulum
Düşük bakım
Farklı optik